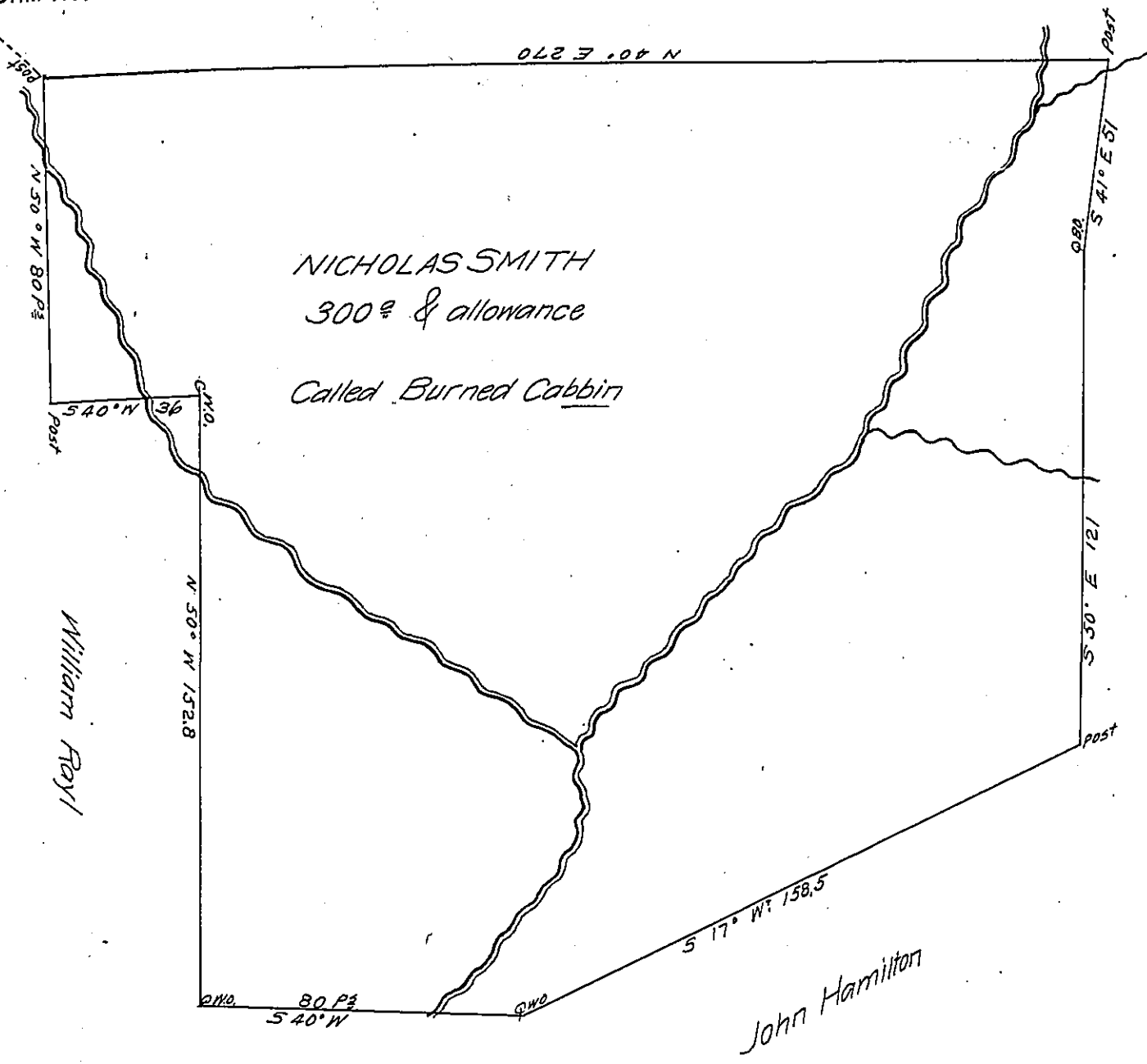


FORM No. 1.

Anthony Yeldall



Situated on a Branch of Dunlaap's Creek in Marallin Township Westmoreland County and Survey'd the 13th day of September 1770 By Order of Survey N^o 3308 dated the 1st day of June 1769

P^r Moses McClean Dep.

To John Lukens Esq^r S.G.

IN TESTIMONY that the above is a copy of the original remaining on file in the Department of Internal Affairs of Pennsylvania, made conformably to an Act of Assembly approved the 16th day of February, 1833, I have hereunto set my Hand and caused the Seal of said Department to be affixed at Harrisburg, this.....seventeenth..... day of.....October..... 1906

Goac D Brown
Secretary of Internal Affairs.